

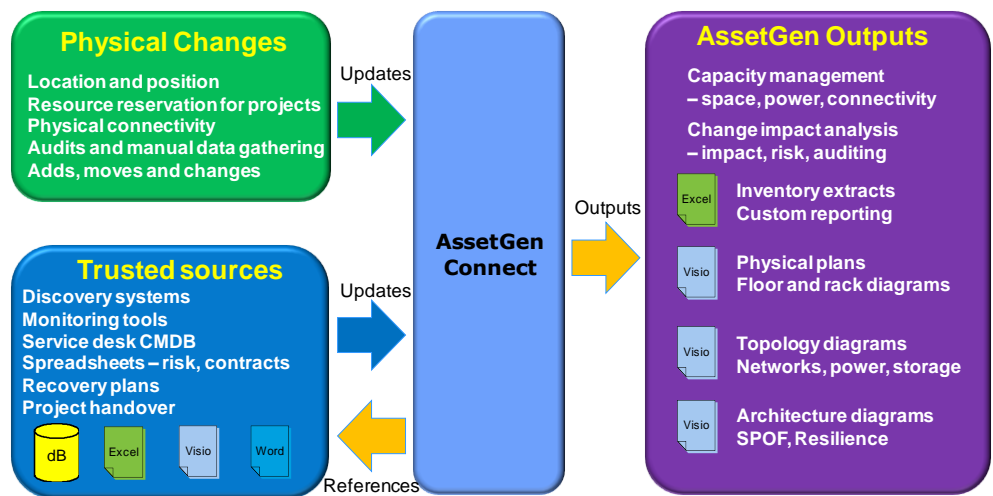
- ❖ IT Inventory, Space and Connectivity Management
- ❖ Automated Visio™ diagramming reduces workload and errors
- ❖ Find any device and it's connectivity (LAN/WAN/SAN/Power) quickly
- ❖ Reduce cost and risk of implementing infrastructure changes

What is AssetGen Connect?

AssetGen Connect is designed to manage the physical aspects of IT infrastructure and can support data centres, networks, cabling, office buildings, etc. It combines hardware inventory with positioning and connectivity so the location of any hardware component can be easily found, as well as dependencies and single points of failure. AssetGen Connect also automates the production of Visio diagrams of floor plans, racks, networks and architecture views. It complements other information sources such as monitoring tools and workflow systems and trusted sources such as recovery documents, maintenance spreadsheets, etc.

The diagram on the right shows how we combine physical change updates with existing data and produce multiple outputs. A new server install may result in changes to

1. Inventory listings
2. Rack and floor plan capacity
3. Rack layout diagrams
4. Patch panel connections
5. Network switch connections
6. Power strip connections
7. Network diagrams
8. Storage diagrams
9. Domain diagrams
10. Capacity reports
11. Change audit trails



With AssetGen Connect this **one** action would support **all** changes to all these different documentation types – with consistency in data and formatting. The only way to easily maintain complex technical infrastructure documentation that can be trusted!

Desktop and Server Versions

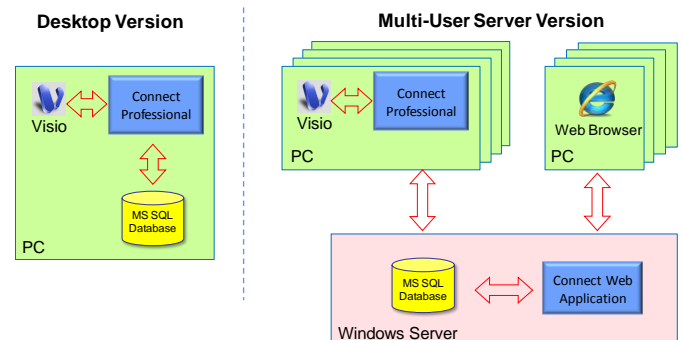
Different versions and licencing options are available to suit many different infrastructure documentation requirements.

Desktop Version

- Internal teams – network, server, power
- Small and medium IT environments
- Auditing and inventory projects
- Local infrastructure responsibility
- Handover or commissioning documentation
- Infrastructure transformation projects

Server Version – Client and web interfaces

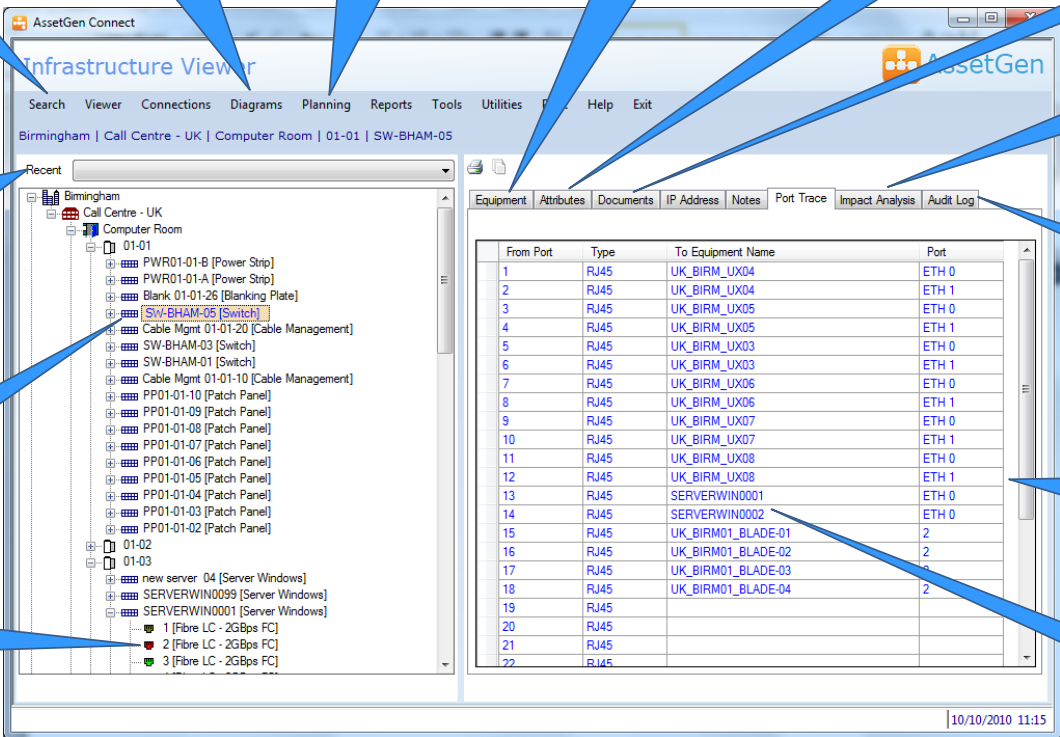
- Data centres, campus and office environments
- NOC (Network Operations Centre) or Operations bridge
- Deployment planning and MAC (moves, adds, changes)
- Outsourcing and out-tasking where formal change documents are required



The server version includes the Connect Web Interface so multiple users (with sufficient rights) can view and update changes to the infrastructure. Licence options are covered at the end of this datasheet.

Finding Equipment and Connectivity Quickly

Key to AssetGen Connect is the ability to find equipment and understand connectivity. This screenshot of a network switch shows the location (Rack 01-01) and the end point network connections in one click.



Search location, type, status, label, attributes, etc

Visio diagram creation and maintenance

Advanced planning / change impact features

Equipment naming, position, status

Equipment attribute viewing and updating

Recovery plans, photos, trusted documents

Business and software change impact

Audit trail of all changes to device

End point connections from device ports

Click on device or port to see more detail

MRU (most recently used) list by user login

Equipment selected ordered by rack position

Ports colour coded for connection status and faults

From Port	Type	To Equipment Name	Port
1	RJ45	UK_BIRM_UX04	ETH 0
2	RJ45	UK_BIRM_UX04	ETH 1
3	RJ45	UK_BIRM_UX05	ETH 0
4	RJ45	UK_BIRM_UX05	ETH 1
5	RJ45	UK_BIRM_UX03	ETH 0
6	RJ45	UK_BIRM_UX03	ETH 1
7	RJ45	UK_BIRM_UX06	ETH 0
8	RJ45	UK_BIRM_UX06	ETH 1
9	RJ45	UK_BIRM_UX07	ETH 0
10	RJ45	UK_BIRM_UX07	ETH 1
11	RJ45	UK_BIRM_UX08	ETH 0
12	RJ45	UK_BIRM_UX08	ETH 1
13	RJ45	SERVERWIN0001	ETH 0
14	RJ45	SERVERWIN0002	ETH 0
15	RJ45	UK_BIRM01_BLADE-01	2
16	RJ45	UK_BIRM01_BLADE-02	2
17	RJ45	UK_BIRM01_BLADE-03	2
18	RJ45	UK_BIRM01_BLADE-04	2
19	RJ45		
20	RJ45		
21	RJ45		
22	RJ45		

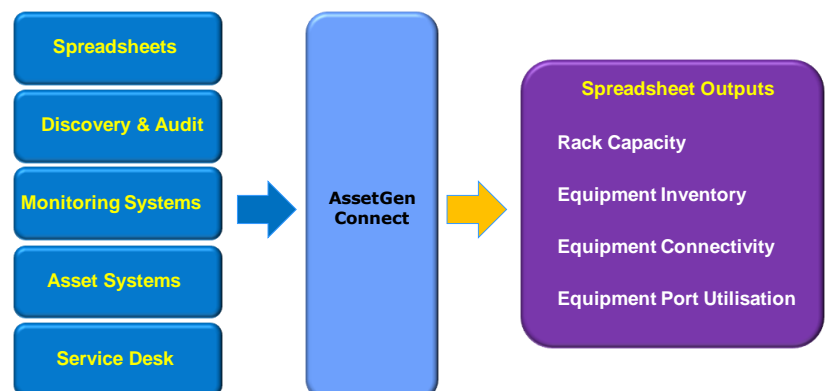
Complex hardware devices such as blade systems, core network switches and Unix systems can be documented within AssetGen for build management. Connectivity options include single path analysis, end to end connections (as above) and full device connectivity with all paths and cable labels. As well as making it easy to find equipment, we can make it simple to check data and power connectivity using the different reporting formats.

Importing and Exporting Infrastructure Data

We have made it easy to populate and update infrastructure data within AssetGen Connect to cope with occasional and local data updates, as well as automated feeds. All changes to equipment attributes have the date and user details modified automatically. Any changes in data are entered into audit logs for internal controls, as well as guarding against data errors from automated sources.

Infrastructure data can be filtered and exported on a regular or ad hoc basis for project and operational reporting. For instance.

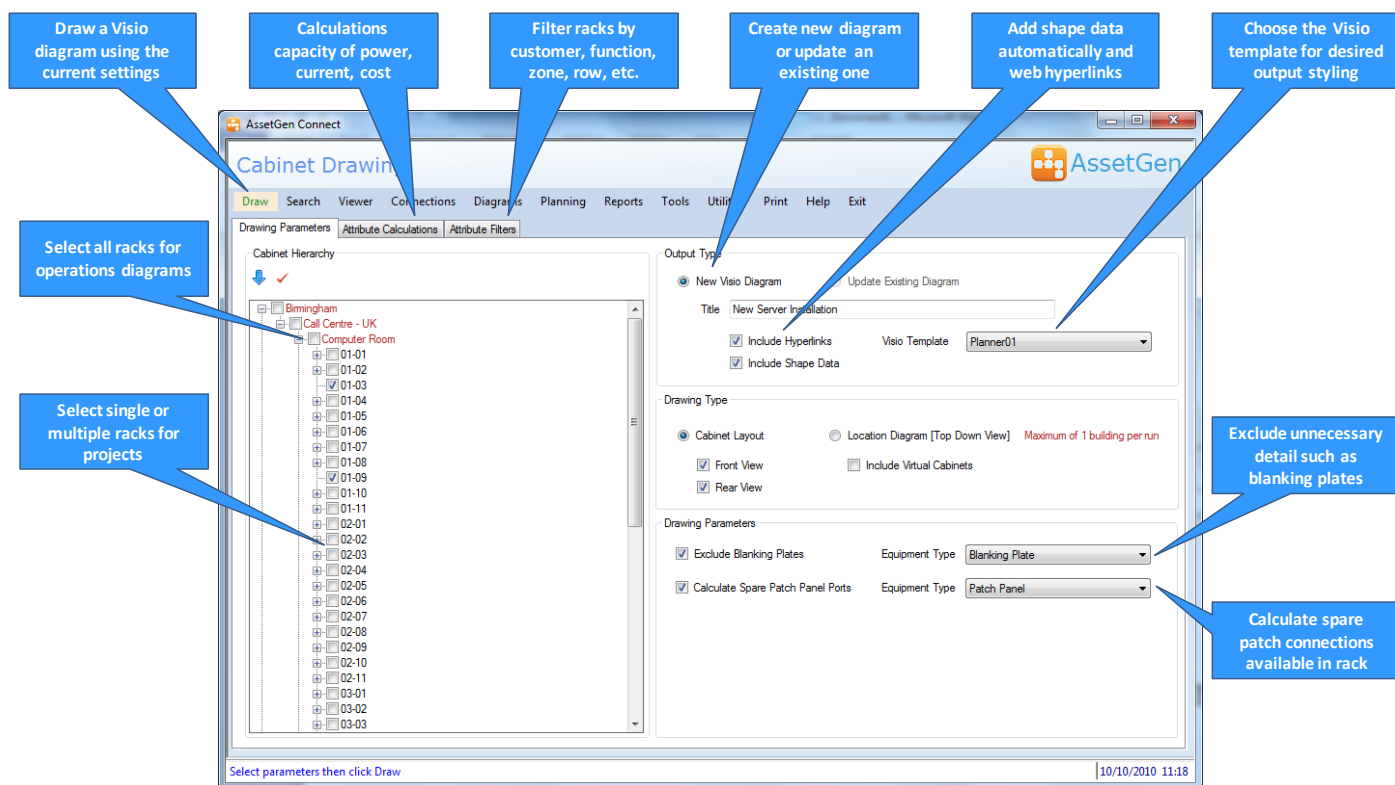
- Rack space by production, test, DR
- Billing for power used by customers
- Network ports used by customer
- Actual and planned rack allocation
- Disaster recovery coverage
- Project build lists
- Network capacity by zone, business unit



Export settings can be saved for management reporting as templates – giving great flexibility in use. There is an optional data loader feature which enables automated population of AssetGen Connect for initial set up.

Automated Visio Floor Plans and Rack Diagramming

Let us draw Visio rack diagrams for you! Select one or multiple racks, hit run – done. Adding a new piece of equipment to a rack, then producing an updated Visio rack diagram will take around 15 seconds. The screenshot below shows that you have many options for creating rack and floor plan diagrams for project and operational needs.



Draw a Visio diagram using the current settings

Calculations capacity of power, current, cost

Filter racks by customer, function, zone, row, etc.

Create new diagram or update an existing one

Add shape data automatically and web hyperlinks

Choose the Visio template for desired output styling

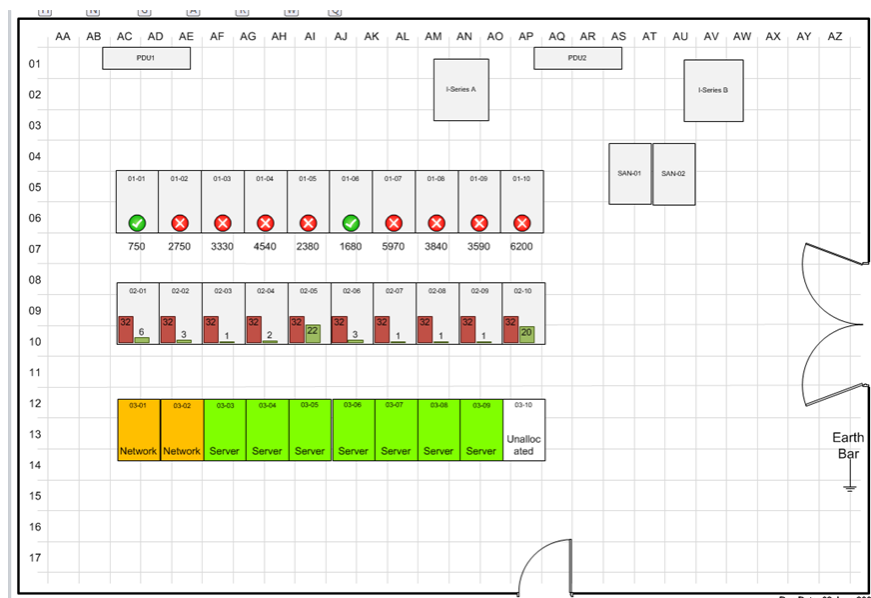
Select all racks for operations diagrams

Select single or multiple racks for projects

Exclude unnecessary detail such as blanking plates

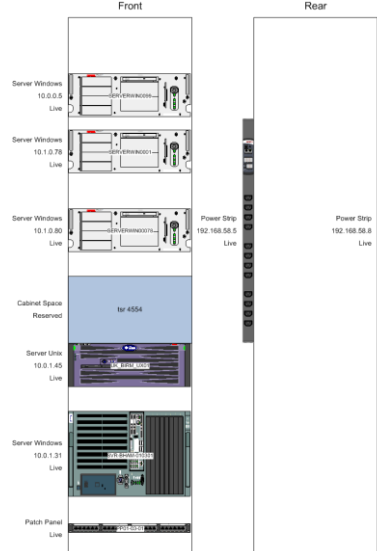
Calculate spare patch connections available in rack

To make maximum use of Visio data graphics features for capacity dashboards we embed details such as the power and current used within racks, making it easy to spot overloads and risks.



Visio floor plan with data graphics for capacity, power feed and function

Birmingham | Call Centre - UK | Computer Room | 01-03

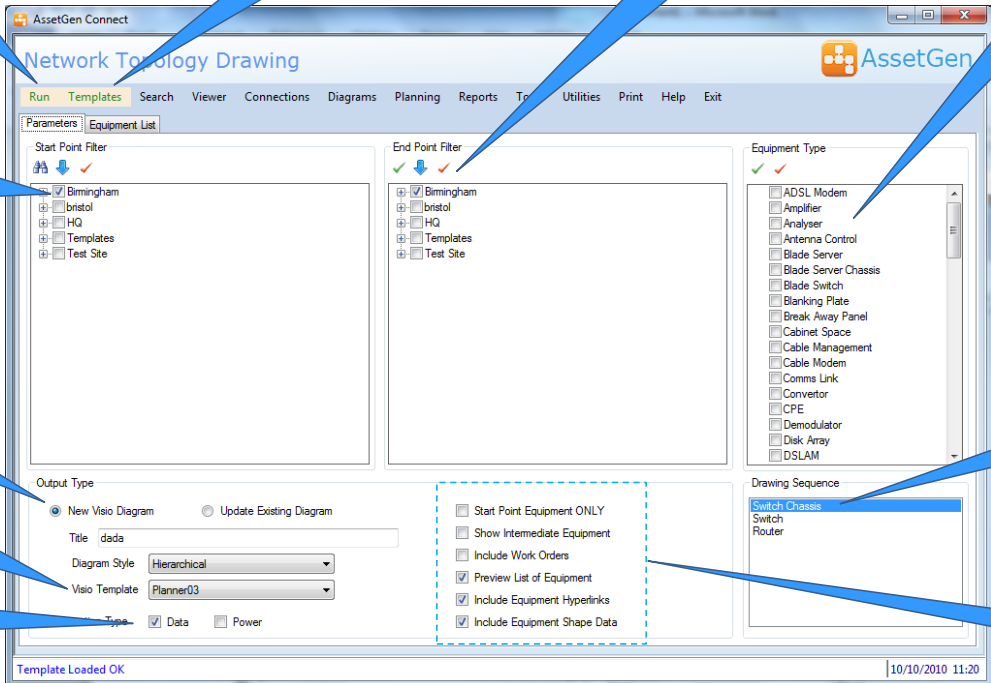


Rack diagram with IP addresses

Whether you want to produce a diagram quickly as part of a project change, or maintain large numbers of physical infrastructure diagrams AssetGen Connect will save 100s or 1000s of man hours. These Visio diagrams can be saved onto an intranet portal with the shape data and web hyperlinks back to the server version preserved.

Automated Visio Network, Power and Other Topology Diagrams

We can help you quickly draw and maintain topology diagrams to suit many needs as the AssetGen system records device connectivity. This screenshot explains some of the many options we provide for topology diagrams that could be focused on LAN, WAN, SAN, power, video, voice, etc. or a combination of them all. The settings chosen can then be saved as a template and re-used for diagram checking and maintenance.



The screenshot shows the 'Network Topology Drawing' window in AssetGen Connect. Callouts point to various features:

- Click run to draw using current settings**: Points to the 'Run' button in the top menu.
- Select a template to re-create settings**: Points to the 'Templates' menu item.
- Select end point or scope of diagram**: Points to the 'End Point Filter' section.
- Choose the device types needed on the diagram**: Points to the 'Equipment Type' list.
- Select start location or equipment**: Points to the 'Start Point Filter' section.
- Create new or update existing diagrams**: Points to the 'New Visio Diagram' and 'Update Existing Diagram' radio buttons.
- Select Visio template to suit diagram style**: Points to the 'Diagram Style' dropdown menu.
- Select connectivity type(s)**: Points to the 'Type' checkboxes for Data and Power.
- Selected device types and drawing order**: Points to the 'Drawing Sequence' list.
- Check boxes for path and shape data controls**: Points to the checkboxes for 'Start Point Equipment ONLY', 'Show Intermediate Equipment', 'Include Work Orders', 'Preview List of Equipment', 'Include Equipment Hyperlinks', and 'Include Equipment Shape Data'.

Topology maps of the following types can all be created and maintained from the same AssetGen source.

LAN building diagrams

WAN diagrams showing site connectivity

Campus LAN connectivity

Single device connectivity

Multi-device diagrams eg. DMZ

Critical system links

Server LAN/SAN connectivity

Single points of failure & resilience

SAN storage diagrams

Backbone and floor cabling

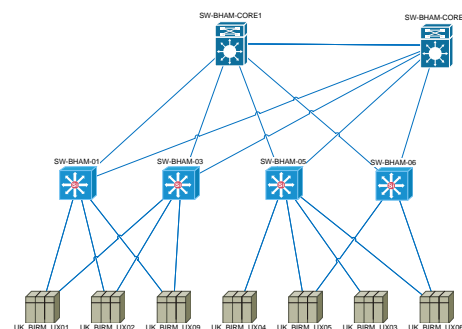
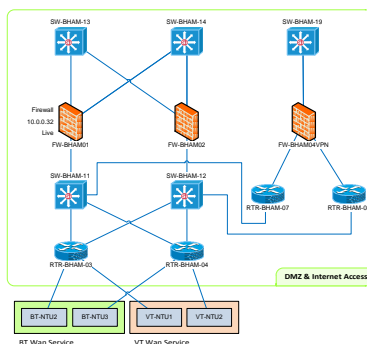
Power distribution

Video and CCTV

End to end paths

Chassis/card connectivity

Network zones



You choose - **Network only topology diagrams** or **Network overview with server connections** or.... **Both!**

The time saved gathering the knowledge, transferring the data to the diagram and then laying out for readability is huge. And then management want it updated every week! AssetGen Connect offers a better way for maintaining topology diagrams – especially if you have a multi-site environment. If you don't need the connectivity data, we also have the equipment extract option for architecture diagrams.

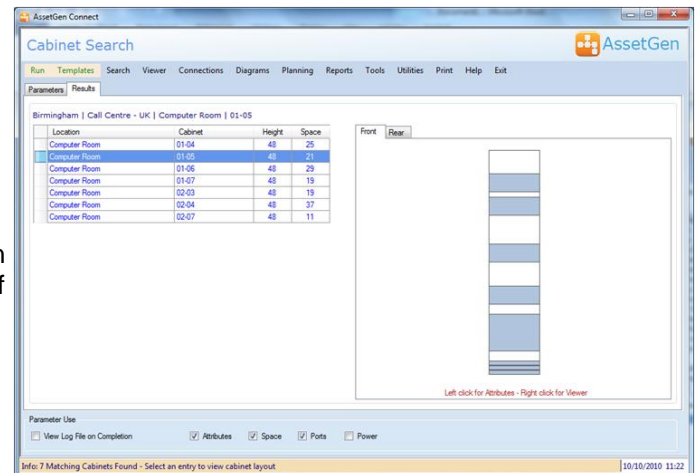
Deployment Planning

Finding available space for servers, switches and other devices can be simplified by using the cabinet search facility. Allocating space may involve selecting cabinets on the basis of any, or all, of the following criteria:

- Location – building, rooms
- Cabinet function - server, network, storage
- Network Zone - internal, internet, customer, DMZ
- Connectivity - copper, fibre, power
- Power – limits, rated, design, actual (value or %)
- Zoning – Cooling zone limits

AssetGen Connect makes it easy to use any of these criteria in one simple process. The results shown on the right are a list of suitable cabinets, with each existing layout displayed.

Once created, the search criteria for a standard component can be saved as a template for re-use by anyone. Finding suitable cabinets for standard platforms then only takes a few seconds. Simple, quick and easy.

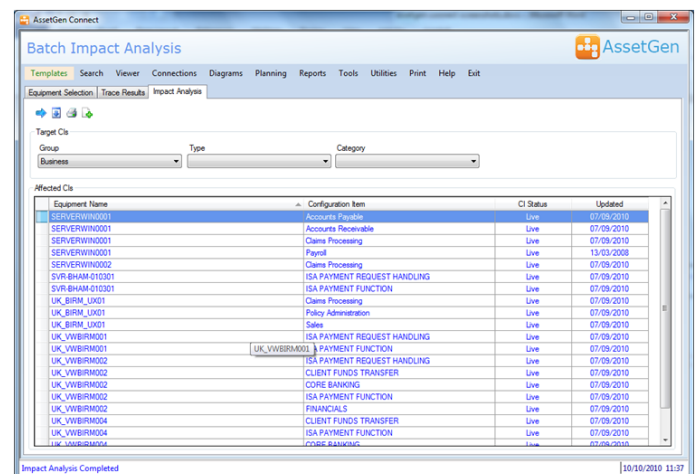


Change Impact Analysis

Predicting the impact of a change or fault within a modern data centre is not easy. If a core switch has 200 ports, how long does it take to identify the business impact of a change? Our batch impact analysis feature reduces the burden of analysing typical changes involving IT infrastructure. For example;

- Power downs –room, cabinet, PDU, breakers
- Re-booting core LAN and SAN switches
- Platform or technology upgrades
- Firmware or OS patches on infrastructure
- Fault impact assessment
- Risks with moving cabinets or equipment

This change impact analysis combines environment, inventory, connectivity and service dependencies – **unique** to the AssetGen range. The screen shot shows both the servers and the business service impacts (provided with AssetGen SysMap) of a PDU power down in a data centre.



Infrastructure Reporting

Reporting can be as simple or extensive as you wish. A runtime version of the industry standard reporting engine (Crystal Reports) is supplied with both desktop and server versions to help produce reports and save in different formats. Reports included with both desktop and server versions include:

1. Audit trails by location, device and user access
2. Cabinet capacity with inventory, space, connectivity and power
3. Equipment inventory, status, port usage, partial connections
4. Forward schedule of changes and work orders (server version only)

Over 30 reports are included as standard with AssetGen covering most common reporting requirements for system administrators and users. Filtering can be applied as required so a single report on port usage can be applied to multiple locations and equipment types.

Custom reports can be added if required and the export features covered earlier enable a wide variety of user reports.

AssetGen Connect / SysMap Integration

If AssetGen SysMap is also installed on the same desktop or server platform, then users can quickly understand the system or service impact of a physical infrastructure change. When planning or communicating device changes, it's important to know who is impacted for change management. Integration features include:

- Device impact analysis
- Multi-device (or batch) impact analysis
- AssetGen Connect attributes visible from within SysMap
- Visio diagrams can have both Connect and SysMap web hyperlinks automatically inserted (server only)

AssetGen SysMap is licenced and installed separately.

AssetGen Connect Licencing and Options

AssetGen Connect is available in desktop and server versions.

Desktop version

The desktop version licence is based on the number of equipment items recorded in the AssetGen Connect Professional database. There is no limit on the numbers of ports or connections.

AssetGen Connect 500	500 devices
AssetGen Connect 1000	1000 devices
AssetGen Connect 2000	2000 devices
AssetGen Connect Unlimited	Unlimited number of devices

Server Version

The multi-user server version AssetGen Connect is licenced by the numbers of sites and buildings. There is **no** restriction on the numbers of devices, ports or connections recorded. There is no user restriction for web browser access. The server version comes with one AssetGen Connect Professional client – additional clients need to be purchased for extra “power users” or administrators.

Single site	Single site, single building
Campus	Single site, multiple buildings
Unlimited	Multiple sites and buildings

To understand more about AssetGen Connect Professional licencing and upgrades between versions, please contact your sales distributor listed below.

Desktop and Server Platform Requirements

AssetGen software is designed to work with standard Microsoft environments for both desktop and servers. For the Visio data graphics feature MS Visio 2007/10 Professional (not supplied) is recommended.

The desktop version is supported on Windows XP, Vista and Windows 7. The recommended server platform is Windows Server 2003/8 and SQL Server 2005/8. For browser access Internet Explorer V6 and above is recommended. Please refer to the technical FAQs on our web site for more details.

All trademarks acknowledged

Developed by:

Sales Distributor:



AssetGen Ltd
www.assetgen.com
 5 Butts Farm Courtyard, Poulton, Cirencester, GL7 5HY
 United Kingdom

Tel: +44(0) 8707 770717



Square Mile Systems Ltd
www.squaremilesystems.com
sales@squaremilesystems.com
 Tel: +44 (0)870 950 4651